

ASDO ROTTERDAM – HbR 600 - 1750 & RDM 300 - 2500

Pollerkopf - HbR		HbR 600	HbR 800	HbR 1000	HbR 1250	HbR 1500	HbR 1750
Trossenzug*	[kN]	600	800	1000	1250	1500	1750
a_p	[mm]	750	750	750	750	750	750
b_p	[mm]	750	750	750	750	750	750
h_k	[mm]	455	455	455	455	455	455
b_k	[mm]	740	740	740	740	740	740
t_k	[mm]	120	120	120	120	120	120
$\varnothing d_k$	[mm]	350	350	350	350	350	350
t_p	[mm]	70	90	90	100	100	100
e_a	[mm]	580	565	565	550	550	550
e_b	[mm]	580	565	565	550	550	550

Gusswerkstoff:

G20Mn5+QT

Verankerung - HbR		HbR 600	HbR 800	HbR 1000	HbR 1250	HbR 1500	HbR 1750
N_6 / \varnothing_6	[mm]	M48	M56	M56	M64	M72	M76
m	[mm]	38	45	45	51	58	61
h_T	[mm]	620	690	690	760	805	890
h_g	[mm]	80	80	80	90	100	100
\varnothing_T	[mm]	145	170	170	195	215	230

Stahlgüte:

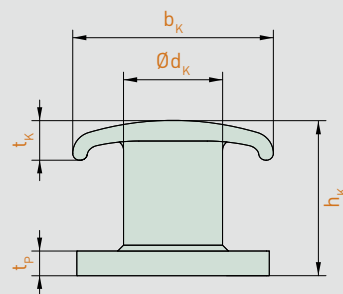
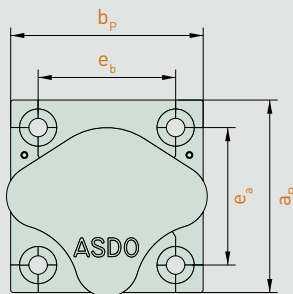
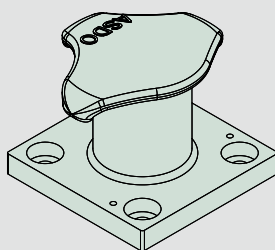
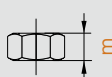
ASDO-500

*Trossenangriffswinkel nach EAU 2012 + 60° horiz. & vert.

Verankerung

Typ HbR

Mutter



Pollerkopf - RDM		RDM 300	RDM 600	RDM 800	RDM 1000	RDM 1250	RDM 1500	RDM 1750	RDM 2000	RDM 2500
Trossenzug*	[kN]	300	600	800	1000	1250	1500	1750	2000	2500
a_p	[mm]	410	480	600	650	700	700	750	800	850
b_p	[mm]	410	480	600	650	700	700	750	800	850
h_k	[mm]	380	390	525	535	545	565	575	575	575
b_k	[mm]	400	470	630	680	680	730	730	730	730
t_k	[mm]	80	80	100	120	135	145	145	145	145
$\varnothing d_k$	[mm]	200	270	340	350	360	380	400	440	460
t_p	[mm]	50	60	70	70	80	90	90	100	110
e_a	[mm]	280	350	450	450	500	500	550	600	600
e_b	[mm]	280	350	450	450	500	500	550	600	600

Gusswerkstoff:

G20Mn5+QT

Verankerung - RDM		RDM 300	RDM 600	RDM 800	RDM 1000	RDM 1250	RDM 1500	RDM 1750	RDM 2000	RDM 2500
N_6 / \varnothing_6	[mm]	M36	M42	M48	M56	M64	M72	M76	M80	M85
m	[mm]	29	34	38	45	51	58	61	64	68
h_T	[mm]	520	580	620	690	760	805	890	980	1000
h_g	[mm]	60	70	80	80	90	100	100	110	120
\varnothing_T	[mm]	110	130	145	170	195	215	230	245	260

Stahlgüte:

ASDO-500

*Trossenangriffswinkel nach EAU 2012 + 60° horiz. & vert.

Verankerung

Typ RDM

